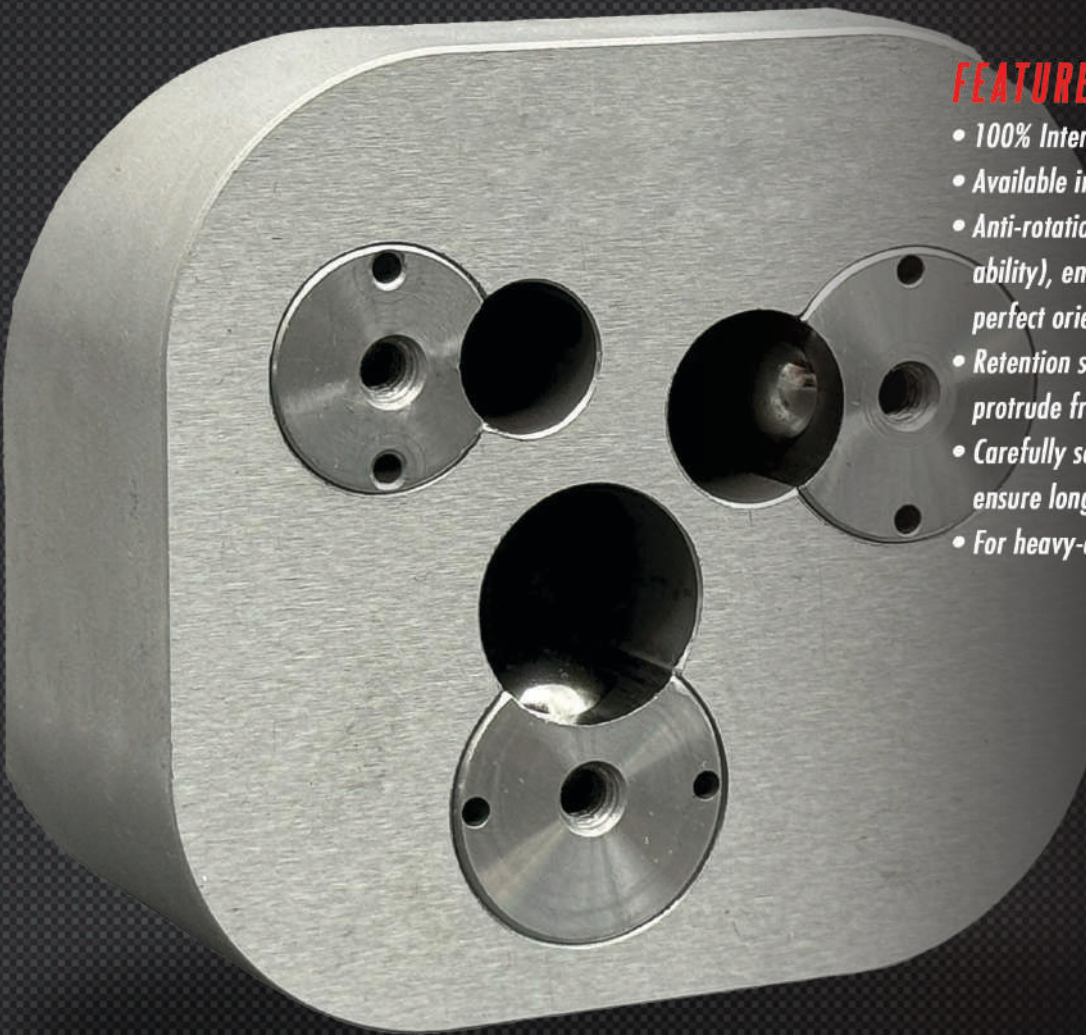




THANKS TO THEIR COMPACT SIZE,

Moeller's Compact True-Fit Ball-Lock Punch Retainer Inserts allow a series of ball-lock punches to be placed in close space applications where standard-type retainers will not suffice. This easy-to-use, standard, product avoids the need for more specialized solutions that are expensive and time consuming, by providing the ability to quickly produce multi-hole ball-lock retainers without intricate knowledge of the ball-lock system.



FEATURES & BENEFITS INCLUDE:

- 100% Interchangeable with competing brands
- Available in standard inch & metric heavy-duty sizes
- Anti-rotation flat (does not compromise interchangeability), ensures proper placement and maintains perfect orientation
- Retention spring is self-contained and does not protrude from the bottom of the retainer
- Carefully selected steel provides optimal hardness to ensure long life
- For heavy-duty backing plate style retainers only



THE MOST COMPACT BALL-LOCK PUNCH RETAINER SOLUTION

FOR ADDITIONAL INFORMATION, TO PLACE AN ORDER, OR FOR DESIGN ASSISTANCE FROM ONE OF OUR EXPERIENCED ENGINEERS CONTACT:

30893 CENTURY DRIVE • WIXOM, MICHIGAN 48393 U.S.A.

PH: 248.668.1166 • FX: 248.668.1004 • TOLL FREE 800.521.7613

E-Quote: quote@moellerpunch.com • www.MoellerPrecisionTool.com

